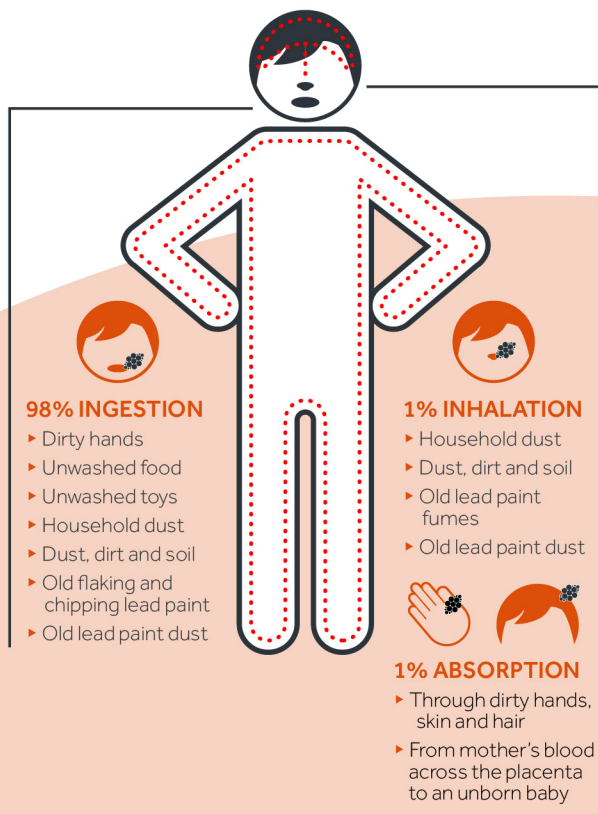


Lead is a metal that has been mined in Mount Isa for many years. It's in the dust, dirt and soil.

Our dry climate means lead dust gets into everything, via the air. It can also be found in old lead paint, especially in homes built before 1970.

Lead does not belong in the human body. When it gets into our bodies, it can build up and make us sick.

MAIN EXPOSURE PATHWAYS OF LEAD



Lead can harm kids' brain development, which may cause behaviour and learning problems that can last a lifetime.

There are simple things you can do to reduce blood levels and prevent harm from lead. Living smart can reduce the amount of lead our kids are exposed to, helping them grow up strong and healthy.



Lead Alliance



Lead Alliance



Living **Safely** with Lead

Get in **Touch**

FREECALL
1800 457 547
leadalliance.com.au

- a** Old Courthouse
Isa Street, Mount Isa.
Queensland 4825
- e** admin@leadalliance.com.au

North West
Hospital and Health Service



Live safe.

Maintaining our homes.



Renovating

Lead Dust

Lead dust builds up over many years in places that are unused and hard to access, like roof spaces, behind walls, as well as between and under floorboards. Renovating can spread lead dust around and expose everyone nearby to lead.

Lead Paint

Lead paint was used in most homes built in Australia before 1970. Lead paint can be dangerous even before renovations start - for example when it chips off around windows and doors. Old paint can flake off in large pieces or break down into smaller chips or dust.

Sheet Leading

Sheet leading was used in older houses for damp courses, flashings, waterproof lining, gutters and cladding. The repair, removal and handling of sheet lead can be dangerous. Lead breaks down over time and if it's disturbed during renovation, lead particles can easily spread and be inhaled or ingested.



While lead is present in the region naturally and from industrial activities, there are simple measures we can all take to reduce our exposure.

Working outside

Lay plastic under the work area to protect the yard and any of the children's play areas.

Close windows and doors. Warn your neighbours so they can protect themselves if dust blows their way.

Working inside

Seal the area off from the rest of the house by covering surfaces with plastic and tape.

Remove household items or cover them with plastic. When demolishing, use water to dampen surfaces first.



Painting or removing paint

Wet sanding and scraping are the safest methods of preparing a surface for painting or removing old lead paint. If the paint is in good condition leave it alone or paint over it.

Don't use open-flamed torches on lead paint as it creates lead fumes. If you use a heat gun, use it on the lowest setting, wear an approved mask or respirator and don't stay in one spot for too long.